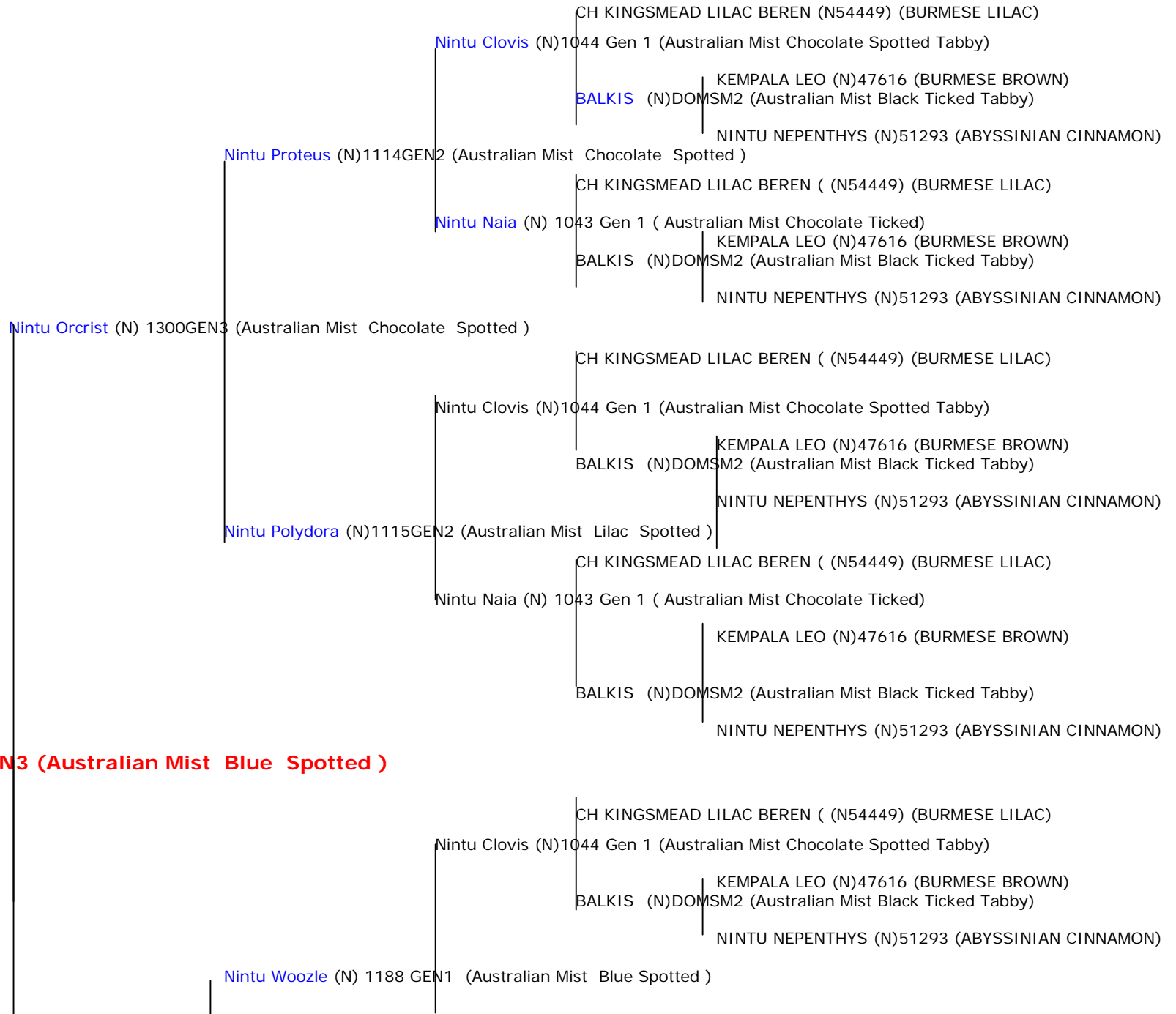


**INCLUDED PEDIGREES TO FOUNDATION:**

**Nintu Proteus; Nintu Polydora; Nintu Clovis; Balkis ;Nintu Naia ;Balkis; Nintu Orcrist; Nintu Kerridwen; Nintu Spockle;Nintu Woozle**



FRITH DOMSM5 (DOMESTIC BLUE&WHITE'TONK')

Nintu Kerridwen (N)1372 GEN2 (Australian Mist Blue Spotted )

ZETES DOMSM6 (DOMESTIC BLUE SPOTTED TABBY)

Nintu Spockle (N)1268 GEN 1 (Australian Mist Black Spotted )

CH KINGSMEAD LILAC BEREN ( N54449) (BURMESE LILAC)

Nintu Naia (N)1043 Gen 1 (Australian Mist Chocolate Ticked)

BALKIS (N)DOMSM2 (Australian Mist Black Ticked Tabby)

NINTU NEPENTHYS (N)51293 (ABYSSINIAN CINNAMON)